

Our Approach

We approach each project with the understanding that traffic flow and accessibility can function harmoniously if designed properly. We work tirelessly with the client and the governing jurisdiction to achieve an engineering solution that provides safe, efficient traffic movement on and off the property and that satisfies high standards for mobility on adjacent roadways and intersections.

We prepare our engineering/planning analysis and recommendations using only the latest in system and operational analysis programs/software. Also, we have developed innovative methods that enable interactive response to land development and/or roadway/intersection alternates.

And, with the advanced technology and systems available today, we'll animate traffic movement so that everyone can see how access and mobility can be integrated and function harmoniously – an especially important tool at contentious public meetings.

ATC is dedicated to serving its products! Revisions, changes, additional meetings, etc. are often required before a project is completed. ATC is always there to service its product and often at no additional fee.

Please call us for a competitive quote on your next traffic engineering job.



Aldridge Transportation Consultants, LLC

***Advanced Transportation Planning
and Traffic Engineering***



Aldridge Transportation Consultants, LLC

1840 W. Littleton Blvd, Ste. B
Littleton, Colorado 80120
Phone (303) 703-9112
Fax (303) 703-9152
www.atceng.com

*We specialize
in Traffic Impact
Studies.*

Company Profile

Aldridge Transportation Consultants, LLC (ATC) is a professional service consulting firm specializing in traffic engineering and transportation planning. The firm was founded in 1991 by John M.W. Aldridge, PE, PTOE, AICP. John is a Colorado Registered Professional Engineer, a Professional Traffic Operations Engineer, and a member of the American Institute of Certified Planners.

ATC's client list is substantial and includes city, county and state governments and numerous private sector developers of major residential, commercial, and shopping center projects. Most projects are technically challenging and ATC is proud of its reputation for resolving difficult traffic engineering and transportation planning problems with creative and innovative design solutions.

ATC has prepared over 1000 traffic impact analyses, designed over 100 traffic signal systems, prepared several access management plans, and served in a sub-consultant role to architectural and civil engineering firms for traffic engineering and transportation planning support. John Aldridge has an impressive list of major project accomplishments with responsibility as the lead traffic engineer and/or transportation planner.

ATC is purposely maintained as a small professional service company to provide clients with a "hands on" approach from a highly experienced professional. We are networked, however, with other professionals in the field of traffic engineering and transportation planning - so no job is too big for us to handle efficiently and in a timely manner.

Recent Projects

South Westminster Transit Oriented Development

Contact: Dave Downing or Tony Chacon, City of Westminster, 303-430-2400

Cornerstar

Contact: Jerry Richmond, Alberta Development Partners, 303-771-4004, or Derek Williams, Vision Land Consultants, 303-674-7355

Stapleton Redevelopment Project

Contact: Derek Brown, Forest City Stapleton, 303-382-1800

Lowry Vista

Contact: Davis Rienhart, IRG Assumptions, 303-838-4735

The Orchard

Contact: John Tindall, Forest City Commercial, 303-382-1800

Northfield Shopping Center

Contact: Brian Levitt,, Forest City Commercial, 303-382-1800

Southwestern Investment Group, Inc.

Contact: Mark Campbell or Jon Benallo, SWIG 303-534-1040

Alameda Station TOD

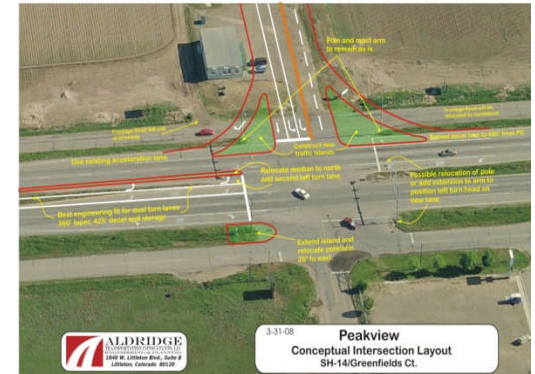
Contact: Lloyd Herrera/Tyler Lowe, Alameda Station, LLC, 303-773-1605

Peakview Business Park

Contact: Mike Donaldson, Donaldson and Company, 970-483-6698

River North

Contact: Neil Boucher, 303-588-8833



Conceptual Design of Roadways/Intersections



3D Animation of Traffic Operations



Traffic Signal Design and System Layout